

KRUPP

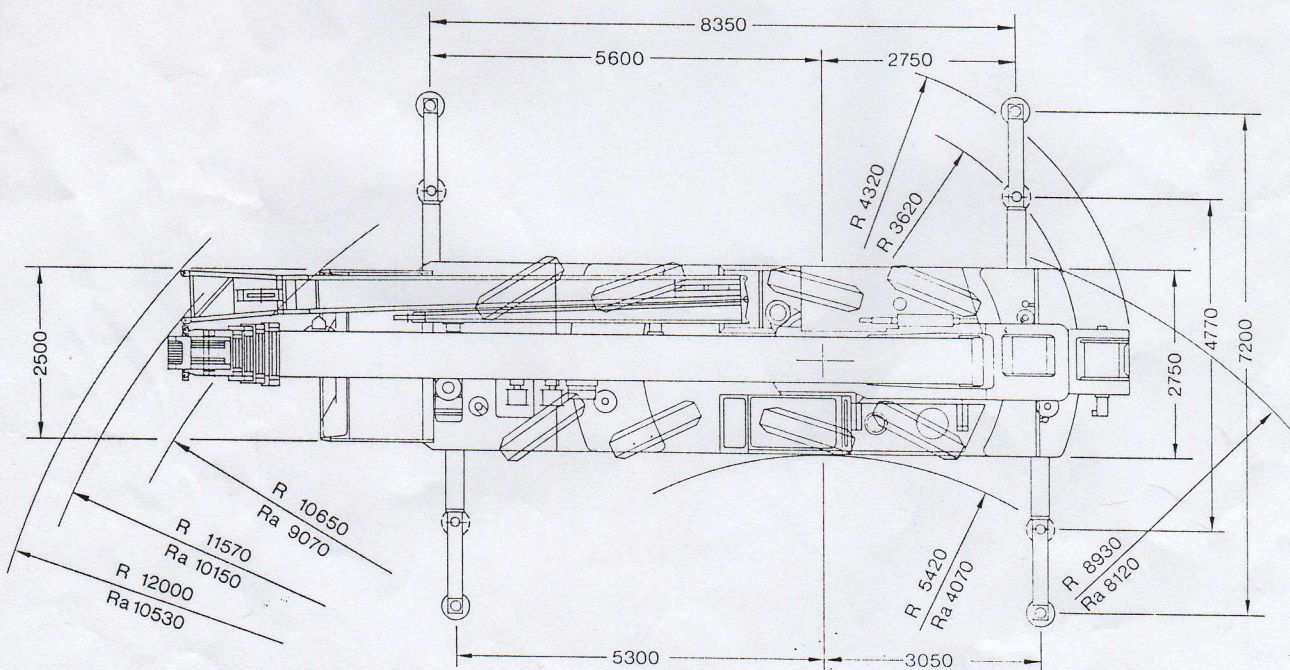
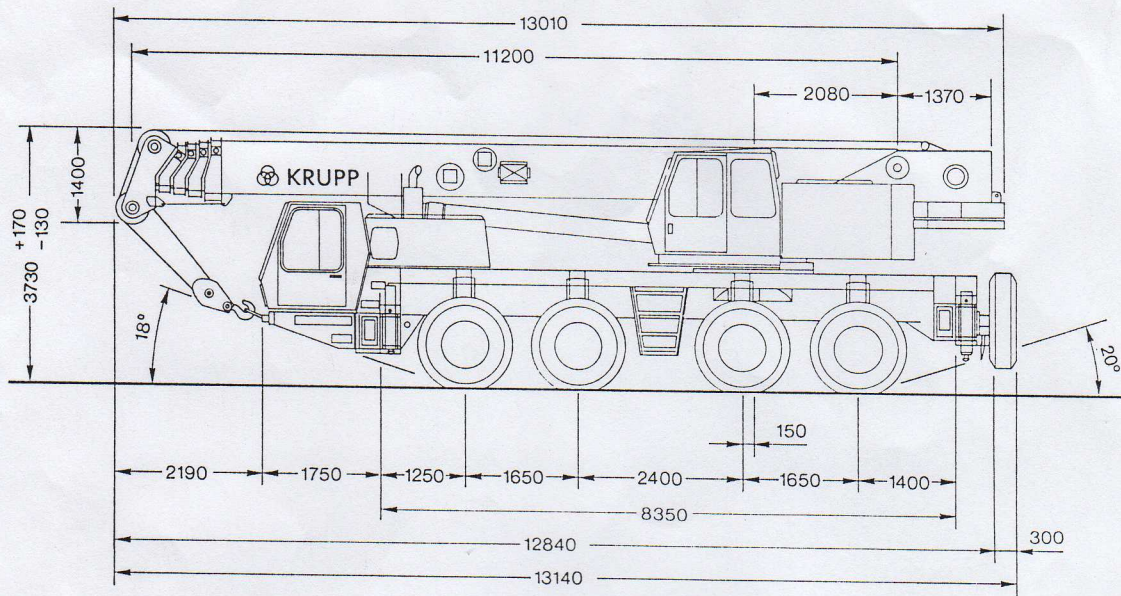
**80T CAPACITY
ALL TERRAIN CRANE**



KMK 4080



Abmessungen Dimensions Encombrement



Ra = Radius allradgelenkt
 Radius all wheels steered
 Rayon toutes les roues directrices

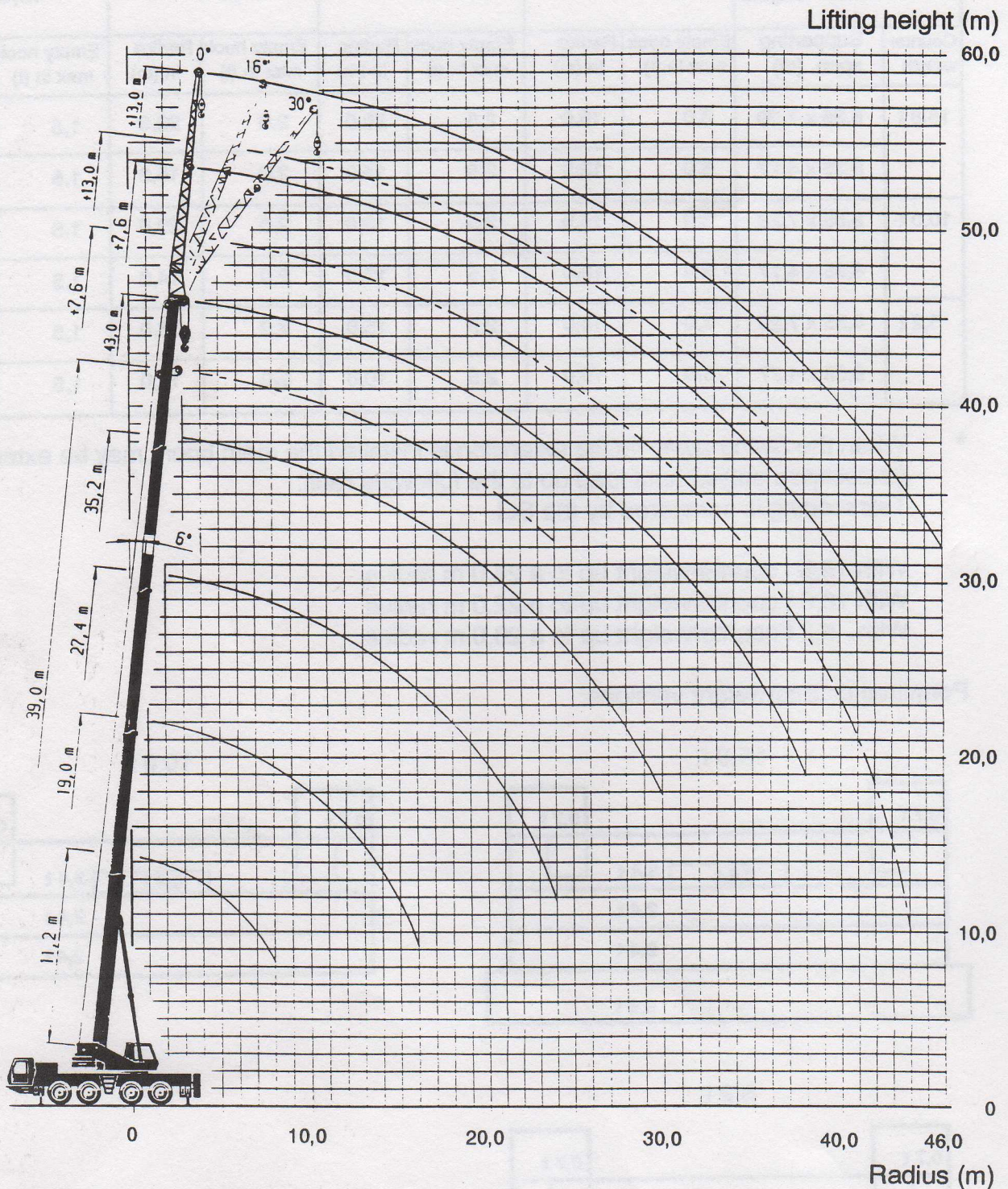
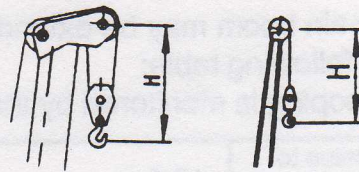


Working range

Lifting capacity tables acc. BS 1757 and DIN 15019.2 / 75%

Working range

Hook block				
Lifting capacity in t	80,0	45,0	18,0	8,0
Distance H in m	3,1	3,0	3,0	2,1



These hook height curves are only valid in conjunction with the radii listed in the lifting capacity tables.

The sheaves and hook heights are calculated theoretically. The actual values deviate from these values due to the flexion of the boom, depending on the load.



Main boom

Lifting capacity tables acc. BS 1757 and DIN 15019.2 / 75%

2.1 Main boom

2 297 200/7 201

	Crane with 15,8 t Counterweight (supporting span 8,35 x 7,20 m)					
	Main boom - fixed lengths in m					
	11.2	11.2	19.0	19.1	22.9	27.0
Slewing range	to the rear	360°				
Tel.sec. I	0.0	0.0	1.0	0.0	1.0	1.0
Tel.sec. II	0.0	0.0	0.0	0.5	0.5	0.5
Tel.sec. III	0.0	0.0	0.0	0.5	0.0	0.5
Tel.sec. IV	0.0	0.0	0.0	0.0	0.0	0.0
Radius	Lifting capacity in t					
3.0	80.0	65.5				
4.0	68.2	55.2	51.5	32.0	32.0	
5.0	58.3	46.7	44.7	32.0	32.0	32.0
6.0	47.6	40.3	39.2	32.0	32.0	28.8
7.0	40.0	35.3	34.1	32.0	29.1	25.9
8.0	33.2	31.2	30.1	30.0	26.3	23.3
9.0			25.5	27.4	23.9	21.1
10.0			21.1	23.1	21.2	19.2
11.0			17.8	19.7	17.9	17.6
12.0			15.2	17.0	15.4	15.9
13.0			13.1	14.9	13.3	13.9
14.0			11.4	13.2	11.5	12.1
15.0			9.9	11.7	10.0	10.6
16.0			8.6	10.4	8.8	9.3
18.0					6.8	7.3
20.0					5.2	5.8
22.0						4.5
24.0						3.5
SLI Code	411	410				
Max. permitted wind speed	8					6



Lifting capacity tables acc. BS 1757 and DIN 15019.2 / 75%

Main boom

2 297 200/7 201

	Crane with 15,8 t Counterweight (supporting span 8,35 x 7,20 m)						
	Main boom - fixed lengths in m						
	27.1	27.4	30.9	34.9	35.2	39.0	43.0
Slewing range	360°						
Tel.sec. I	0.0	0.0	1.0	1.0	0.0	1.0	1.0
Tel.sec. II	1.0	0.0	1.0	1.0	1.0	1.0	1.0
Tel.sec. III	1.0	1.0	0.5	1.0	1.0	1.0	1.0
Tel.sec. IV	0.0	1.0	0.0	0.0	1.0	0.5	1.0
Radius	Lifting capacity in t						
5.0	24.0	13.0	23.0				
6.0	22.2	13.0	23.0	17.0	13.0	13.0	
7.0	19.8	13.0	21.9	17.0	13.0	13.0	11.0
8.0	17.9	13.0	20.2	17.0	13.0	13.0	11.0
9.0	16.2	12.0	18.5	16.5	13.0	13.0	11.0
10.0	14.8	11.0	16.9	15.2	12.5	13.0	11.0
11.0	13.6	10.0	15.7	14.0	11.6	13.0	11.0
12.0	12.5	9.3	14.4	13.0	10.7	12.3	11.0
13.0	11.6	8.6	13.3	12.1	9.9	11.5	11.0
14.0	10.8	8.0	12.1	11.2	9.2	10.7	11.0
15.0	10.1	7.5	10.6	10.5	8.5	10.0	10.0
16.0	9.4	7.0	9.4	9.7	7.9	9.4	9.2
18.0	8.2	6.3	7.3	7.7	6.9	8.2	7.9
20.0	7.0	5.7	5.8	6.1	6.1	6.6	7.0
22.0	5.7	5.2	4.5	4.9	5.5	5.4	5.8
24.0	4.7	4.7	3.5	3.9	5.0	4.4	4.7
26.0			2.7	3.0	4.6	3.5	3.9
28.0				2.3	4.0	2.8	3.2
30.0				1.7	3.4	2.2	2.6
32.0						1.7	2.0
34.0						1.2	1.6
36.0						0.8	1.2
38.0							0.8
SLI Code	410						
Max. permitted wind speed	6						



Swing-away lattice extension Lifting capacity tables acc. BS 1757 and DIN 15019.2 / 75%

2.2 Swing-away lattice extension

2 297 204

Crane with 15,8 t Counterweight (supporting span 8,35 x 7,20 m)						
Angle of swing-away lattice extension 0°						
Swing-away lattice extension length 8,0 m						
Main boom - fixed lengths in m						
	27.0	27.1	34.9	35.2	39.0	43.0
Tel.sec. I	1.0	0.0	1.0	0.0	1.0	1.0
Tel.sec. II	0.5	1.0	1.0	1.0	1.0	1.0
Tel.sec. III	0.5	1.0	1.0	1.0	1.0	1.0
Tel.sec. IV	0.0	0.0	0.0	1.0	0.5	1.0
Slewing-range	360°					
Radius	Lifting capacity in t					
4.0	12.4					
5.0	12.4	12.4	10.0	8.0		
6.0	12.4	12.4	10.0	8.0	8.1	
7.0	12.1	11.7	10.0	8.0	8.1	5.5
8.0	11.4	11.0	10.0	8.0	8.1	5.5
9.0	10.7	10.4	10.0	8.0	8.1	5.5
10.0	10.1	9.8	9.8	8.0	8.1	5.5
11.0	9.6	9.3	9.4	8.0	8.1	5.5
12.0	9.0	8.8	9.1	8.0	8.1	5.5
13.0	8.6	8.4	8.7	7.9	8.1	5.5
14.0	8.1	8.0	8.4	7.6	7.9	5.5
15.0	7.8	7.6	8.1	7.3	7.7	5.5
16.0	7.4	7.3	7.8	6.9	7.5	5.5
18.0	6.8	6.7	7.3	6.3	7.1	5.5
20.0	6.3	6.0	6.9	5.5	6.8	5.5
22.0	5.7	5.5	5.6	5.0	5.9	5.5
24.0	4.7	5.0	4.6	4.5	4.9	5.1
26.0	3.8	4.6	3.8	4.1	4.0	4.3
28.0	3.1	3.9	3.0	3.7	3.3	3.6
30.0	2.5	3.3	2.4	3.3	2.7	2.9
32.0		2.8	1.9	3.1	2.1	2.4
34.0			1.4	2.8	1.7	1.9
36.0			1.0	2.3	1.2	1.5
38.0			0,6	2.0	0.9	1.1
40.0				1.6	0.6	0.8
42.0						0.5
SLI - Code	420					
Max. permitted wind speed	5					



Lifting capacity tables acc. BS 1757 and DIN 15019.2 / 75%

Swing-away lattice extension

2 297 205

Crane with 15,8 t Counterweight (supporting span 8,35 x 7,20 m)						
Angle of swing-away lattice extension 16°						
Swing-away lattice extension length 8,0 m						
Main boom - fixed lengths in m						
	27.0	27.1	34.9	35.2	39.0	43.0
Tel.sec. I	1.0	0.0	1.0	0.0	1.0	1.0
Tel.sec. II	0.5	1.0	1.0	1.0	1.0	1.0
Tel.sec. III	0.5	1.0	1.0	1.0	1.0	1.0
Tel.sec. IV	0.0	0.0	0.0	1.0	0.5	1.0
Slewing-range	360°					
Radius	Lifting capacity in t					
5.0	9.0	8.8				
6.0	8.5	8.4	8.2			
7.0	8.1	8.0	7.9	7.4	7.4	
8.0	7.8	7.7	7.7	7.2	7.3	5.6
9.0	7.5	7.4	7.4	6.9	7.1	5.6
10.0	7.2	7.1	7.2	6.8	6.9	5.6
11.0	6.9	6.8	7.0	6.5	6.7	5.6
12.0	6.6	6.6	6.8	6.2	6.6	5.6
13.0	6.3	6.2	6.6	6.0	6.3	5.6
14.0	6.0	5.9	6.4	5.9	6.0	5.6
15.0	5.8	5.7	6.1	5.7	5.9	5.6
16.0	5.6	5.6	5.9	5.6	5.8	5.5
18.0	5.3	5.3	5.6	5.3	5.5	5.4
20.0	5.0	5.0	5.3	5.1	5.3	5.2
22.0	4.8	4.8	5.1	4.8	5.1	5.0
24.0	4.6	4.6	4.9	4.5	4.9	4.9
26.0	4.0	4.4	4.0	4.1	4.3	4.5
28.0	3.2	4.1	3.2	3.8	3.5	3.8
30.0	2.5	3.4	2.6	3.4	2.9	3.1
32.0	1.9	2.8	2.0	3.1	2.3	2.6
34.0			1.5	2.8	1.8	2.1
36.0			1.1	2.4	1.4	1.6
38.0			0.7	2.0	1.0	1.3
40.0				1.6	0.6	0.9
42.0						0.6
SLI - Code	421					
Max. permitted wind speed	5					



Swing-away lattice extension Lifting capacity tables acc. BS 1757 and DIN 15019.2 / 75%

2 297 206

Crane with 15,8 t Counterweight (supporting span 8,35 x 7,20 m)						
Angle of swing-away lattice extension 30°						
Swing-away lattice extension length 8,0 m						
Main boom - fixed lengths in m						
	27.0	27.1	34.9	35.2	39.0	43.0
Tel.sec. I	1.0	0.0	1.0	0.0	1.0	1.0
Tel.sec. II	0.5	1.0	1.0	1.0	1.0	1.0
Tel.sec. III	0.5	1.0	1.0	1.0	1.0	1.0
Tel.sec. IV	0.0	0.0	0.0	1.0	0.5	1.0
Slewing-range	360°					
Radius	Lifting capacity in t					
6.0	6.6	6.5				
7.0	6.3	6.3	6.0			
8.0	5.9	5.9	5.9	5.7	5.7	
9.0	5.8	5.7	5.7	5.5	5.6	5.3
10.0	5.6	5.6	5.6	5.4	5.5	5.2
11.0	5.5	5.4	5.5	5.3	5.4	5.2
12.0	5.3	5.3	5.4	5.2	5.3	5.1
13.0	5.2	5.2	5.3	5.1	5.2	5.0
14.0	5.1	5.0	5.2	5.0	5.1	4.9
15.0	5.0	4.9	5.1	4.9	5.0	4.9
16.0	4.9	4.8	5.0	4.8	4.9	4.8
18.0	4.7	4.7	4.8	4.7	4.8	4.7
20.0	4.5	4.5	4.7	4.6	4.7	4.6
22.0	4.4	4.4	4.6	4.5	4.6	4.5
24.0	4.3	4.3	4.5	4.4	4.5	4.4
26.0	4.1	4.2	4.2	4.1	4.3	4.3
28.0	3.3	4.0	3.4	3.8	3.7	3.9
30.0	2.5	3.4	2.7	3.4	3.0	3.3
32.0			2.1	3.2	2.4	2.7
34.0			1.6	2.9	1.9	2.2
36.0			1.1	2.4	1.4	1.7
38.0			0.7	2.0	1.0	1.3
40.0					0.6	1.0
42.0						0.6
SLI - Code	422					
Max. permitted wind speed	5					



Lifting capacity tables acc. BS 1757 and DIN 15019.2 / 75%

Swing-away lattice extension

2 297 207

Crane with 15,8 t Counterweight (supporting span 8,35 x 7,20 m)						
Angle of swing-away lattice extension 0°						
Swing-away lattice extension length 13,0 m						
Main boom - fixed lengths in m						
	27.0	27.1	34.9	35.2	39.0	43.0
Tel.sec. I	1.0	0.0	1.0	0.0	1.0	1.0
Tel.sec. II	0.5	1.0	1.0	1.0	1.0	1.0
Tel.sec. III	0.5	1.0	1.0	1.0	1.0	1.0
Tel.sec. IV	0.0	0.0	0.0	1.0	0.5	1.0
Slewing-range	360°					
Radius	Lifting capacity in t					
5.0	6.2	6.2				
6.0	6.2	6.2	5.8	4.7		
7.0	6.2	6.2	5.8	4.7	4.7	
8.0	6.1	5.9	5.7	4.7	4.7	3.7
9.0	5.7	5.6	5.5	4.7	4.7	3.7
10.0	5.4	5.3	5.3	4.7	4.7	3.7
11.0	5.1	5.0	5.1	4.7	4.7	3.7
12.0	4.9	4.8	4.9	4.5	4.7	3.7
13.0	4.6	4.6	4.8	4.4	4.5	3.7
14.0	4.4	4.4	4.6	4.2	4.4	3.7
15.0	4.2	4.2	4.4	4.1	4.3	3.7
16.0	4.0	4.0	4.3	4.0	4.2	3.7
18.0	3.7	3.7	4.0	3.7	3.9	3.7
20.0	3.4	3.4	3.7	3.5	3.7	3.6
22.0	3.2	3.2	3.5	3.3	3.5	3.4
24.0	3.0	3.0	3.3	3.1	3.3	3.3
26.0	2.8	2.8	3.1	3.0	3.1	3.1
28.0	2.6	2.6	2.9	2.8	3.0	3.0
30.0	2.5	2.4	2.8	2.7	2.8	2.8
32.0	2.3	2.3	2.4	2.6	2.5	2.7
34.0	2.1	2.2	1.9	2.4	2.1	2.3
36.0	1.7	2.1	1.5	2.3	1.7	1.9
38.0			1.1	2.2	1.3	1.5
40.0			0.8	2.0	1.0	1.2
42.0			0.5	1.7	0.7	0.9
44.0				1.4		0.6
SLI - Code	430					
Max. permitted wind speed	5					



Swing-away lattice extension Lifting capacity tables acc. BS 1757 and DIN 15019.2 / 75%

2 297 208

Crane with 15,8 t Counterweight (supporting span 8,35 x 7,20 m)						
Angle of swing-away lattice extension 16°						
Swing-away lattice extension length 13,0 m						
Main boom - fixed lengths in m						
	27.0	27.1	34.9	35.2	39.0	43.0
Tel.sec. I	1.0	0.0	1.0	0.0	1.0	1.0
Tel.sec. II	0.5	1.0	1.0	1.0	1.0	1.0
Tel.sec. III	0.5	1.0	1.0	1.0	1.0	1.0
Tel.sec. IV	0.0	0.0	0.0	1.0	0.5	1.0
Slewing-range	360°					
Radius	Lifting capacity in t					
7.0	4.4	4.3				
8.0	4.2	4.1	4.1			
9.0	4.0	4.0	4.0	3.8		
10.0	3.9	3.8	3.9	3.7	3.7	
11.0	3.7	3.7	3.7	3.6	3.6	3.5
12.0	3.6	3.5	3.6	3.5	3.5	3.4
13.0	3.4	3.4	3.5	3.4	3.5	3.3
14.0	3.3	3.3	3.4	3.3	3.4	3.3
15.0	3.2	3.2	3.3	3.2	3.3	3.2
16.0	3.1	3.1	3.2	3.1	3.2	3.1
18.0	2.9	2.9	3.1	3.0	3.0	3.0
20.0	2.8	2.7	2.9	2.8	2.9	2.9
22.0	2.6	2.6	2.8	2.7	2.8	2.8
24.0	2.5	2.5	2.7	2.6	2.7	2.7
26.0	2.4	2.4	2.6	2.5	2.6	2.6
28.0	2.3	2.3	2.5	2.4	2.5	2.5
30.0	2.2	2.2	2.4	2.3	2.4	2.4
32.0	2.1	2.1	2.3	2.3	2.3	2.3
34.0	2.1	2.1	2.2	2.2	2.3	2.3
36.0	1.7	2.1	1.7	2.1	1.9	2.1
38.0			1.3	2.1	1.5	1.7
40.0			0.9	2.1	1.2	1.4
42.0			0.6	1.8	0.8	1.0
44.0				1.4	0.5	0.8
SLI - Code	431					
Max. permitted wind speed	5					



Lifting capacity tables acc. BS 1757 and DIN 15019.2 / 75%

Swing-away lattice extension

2 297 209

Crane with 15,8 t Counterweight (supporting span 8,35 x 7,20 m)						
Angle of swing-away lattice extension 30°						
Swing-away lattice extension length 13,0 m						
Main boom - fixed lengths in m						
	27.0	27.1	34.9	35.2	39.0	43.0
Tel.sec. I	1.0	0.0	1.0	0.0	1.0	1.0
Tel.sec. II	0.5	1.0	1.0	1.0	1.0	1.0
Tel.sec. III	0.5	1.0	1.0	1.0	1.0	1.0
Tel.sec. IV	0.0	0.0	0.0	1.0	0.5	1.0
Slewing-range	360°					
Radius	Lifting capacity in t					
9.0	3.2					
10.0	3.1	3.1				
11.0	3.0	3.0	3.0			
12.0	2.9	2.9	2.9	2.8	2.9	
13.0	2.8	2.8	2.9	2.8	2.8	2.8
14.0	2.8	2.7	2.8	2.7	2.8	2.7
15.0	2.7	2.7	2.7	2.7	2.7	2.7
16.0	2.6	2.6	2.7	2.6	2.7	2.6
18.0	2.5	2.5	2.6	2.5	2.6	2.5
20.0	2.4	2.4	2.5	2.4	2.5	2.5
22.0	2.3	2.3	2.4	2.4	2.4	2.4
24.0	2.2	2.2	2.3	2.3	2.3	2.3
26.0	2.2	2.2	2.3	2.2	2.3	2.3
28.0	2.1	2.1	2.2	2.2	2.2	2.2
30.0	2.1	2.1	2.2	2.1	2.2	2.2
32.0	2.1	2.1	2.1	2.1	2.1	2.1
34.0	2.1	2.1	2.1	2.1	2.1	2.1
36.0	1.7	2.1	1.8	2.1	2.1	2.1
38.0			1.4	2.1	1.6	1.9
40.0			1.0	2.0	1.3	1.5
42.0			0.6	1.8	0.9	1.2
44.0				1.4	0.6	0.8
46.0						0.6
SLI - Code	432					
Max. permitted wind speed	5					